



SCT Livewire TS 5015C67 2011-2014 Ford 6.7L Diesel

VERY IMPORTANT!!!!!!!!!!!!!! PLEASE READ ALL INSTRUCTIONS!

Always tune truck before deleting the exhaust

STEP 1- STEP 1- Plug tuner into truck, press power button on top. From main screen, swipe the screen from right to left. A new set of menu choices will appear. Press Vehicle Info. Follow key on/off prompts. Tuner will display ecu/tcu strategy and sw part numbers for ecu/tcu. See if your stock ecu strategy is on the list below;

DDBZ1AA	DDBZ1A6	DDBZ1A8	DDBZ1CA	DDBZ1C4
DDBZ1C5	DDBZ1D4	DDBZ1M3	DDBZ1M5	DDBZ1N2

If your strategy is in the list, skip to STEP 7

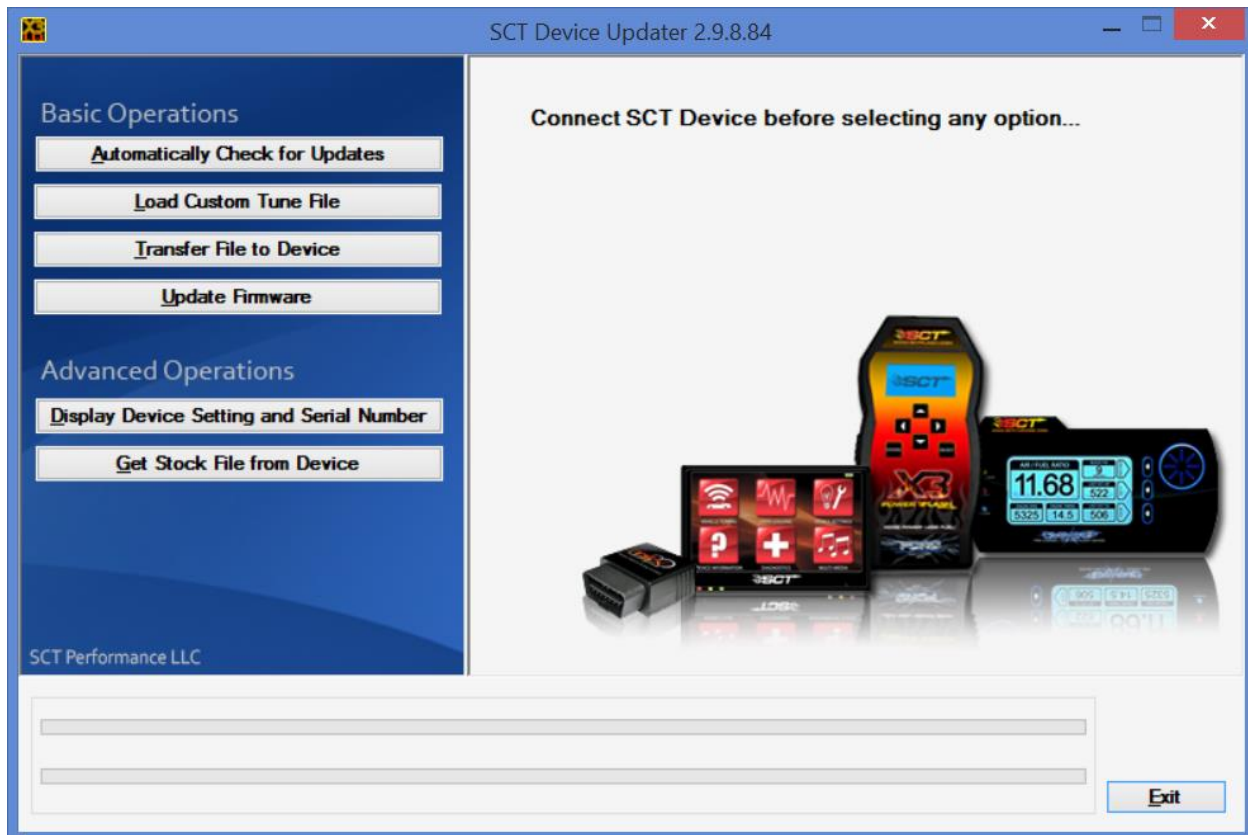
STEP 2- Go to truck and choose program vehicle. At the top you will see 6.7L Superduty pre loaded tunes. Choose this and go through the options. It will get to a point where it gives you an error code and device needs to be updated.

STEP 3- Start with tuner unplugged. Go to your web browser and type in <http://sctflash.com/software/SCTDeviceUpdater.exe> The link is also available on our website www.punchitperformance.com under tech support tab. Choose RUN and install software. There will be two installers that come up, install both. Once installed, plug tuner in with supplied usb cable. Allow a couple minutes to automatically install drivers.

STEP 4- Open the new software from your desktop that was just installed



It may say installing drivers at the bottom of the screen, please allow up to 5 minutes. This usually happens with Windows 8.



STEP 5- Click Automatically Check for Updates. A progress bar should be moving across the bottom and then a prompt will appear that device has been updated and you can return to the vehicle.

STEP 6- Plug tuner into vehicle, select Program Vehicle, (DO NOT SELECT 67L Superduty Pre Loaded Tunes at the top this time)

STEP 7- Under Program Vehicle, Select the 2011-2012 or 2013-2014 MUST LOAD FIRST file based on your trucks model year. DO NOT SELECT ANY OPTIONS, this can be done on another step. PLEASE FOLLOW KEY ON/OFF PROMPTS PRECISELY and STAY WITH VEHICLE WHILE PROGRAMMING. Various warning lights and messages may come up on dash which is normal.

STEP 8- After the LOAD First file has been fully installed, Choose one of the other Custom Tunes. LEVEL 1 TOW, LEVEL 2 STREET, LEVEL 3 PERFORMANCE, or LEVEL 4 EXTREME and go through the installation process. 13-14s only have 3 Levels. You can select your tire size during this process but do not select 34.1" as it will set a check engine light. 34.0" is the highest allowed by a 6.7L pcm. FOLLOW KEY ON/OFF PROMPTS PRECISELY. Once it says Download completed, you may unplug tuner and proceed with your exhaust and/or EGR removal. The tuning doesn't require any of the exhaust sensors so you can unplug them all from the frame rail.

If there are any questions, please email tech@punchitperformance.com